

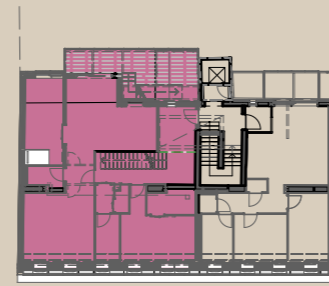
# Stil-Werk

Theresiengasse 10,  
1180 Wien

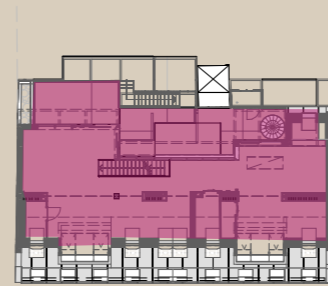


## TOP 16 | 1.+2. DG

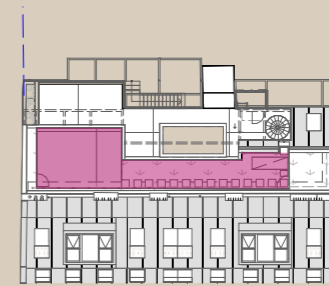
Zimmer	4
Wohnfläche	256,95 m <sup>2</sup>
Zubehör	-
Terrasse/Balkon	62,91 m <sup>2</sup>
Dachterrasse	45,30 m <sup>2</sup>



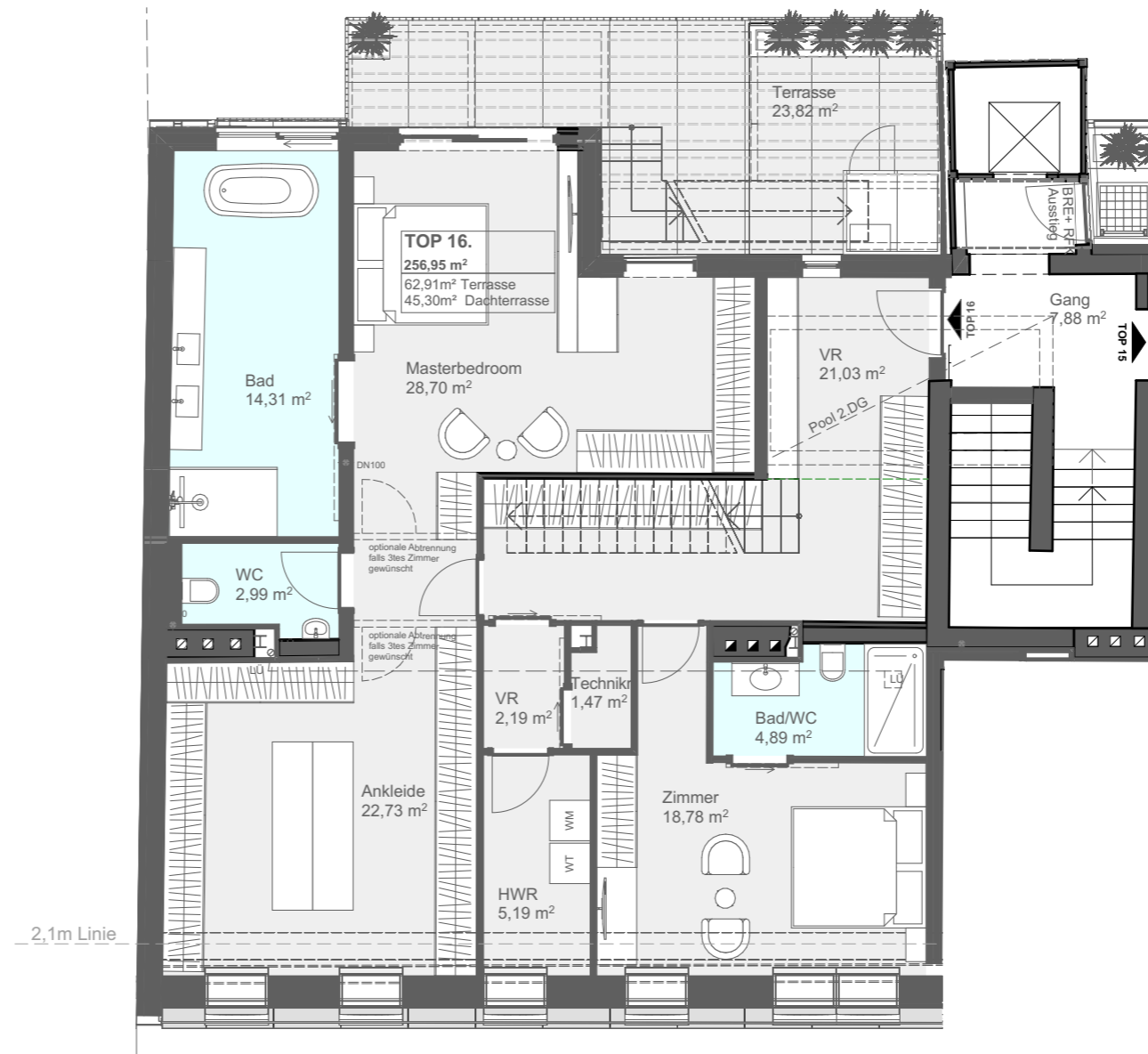
1. Dachgeschoss



2. Dachgeschoss



Dachdraufsicht



1. Dachgeschoss

